



Vertical

washing machine



systron **WM**

27/6 | 29/6 | 33/6

The **systron WM** is a **vertical washing machine** for flat glass processing companies with highest demands. Due to the solid construction and the use of high-quality components, maximum performance will be reached. The barrier-free design allows the operator an ergonomic working position and easy access to all machine components.



The entire drive technology of the **systron WM** is installed on the machine roof and protected against water. This design allows easy access to all machine components.



Highlights

- + 6 brushes
- + Two water tanks each with an integrated heating element of 6kW
- + Drive technology in the dry area
- + Intuitive operation by touch screen
- + No mechanical contact with glass coatings
- + Machine body and doors made of stainless steel

Construction

Washing section

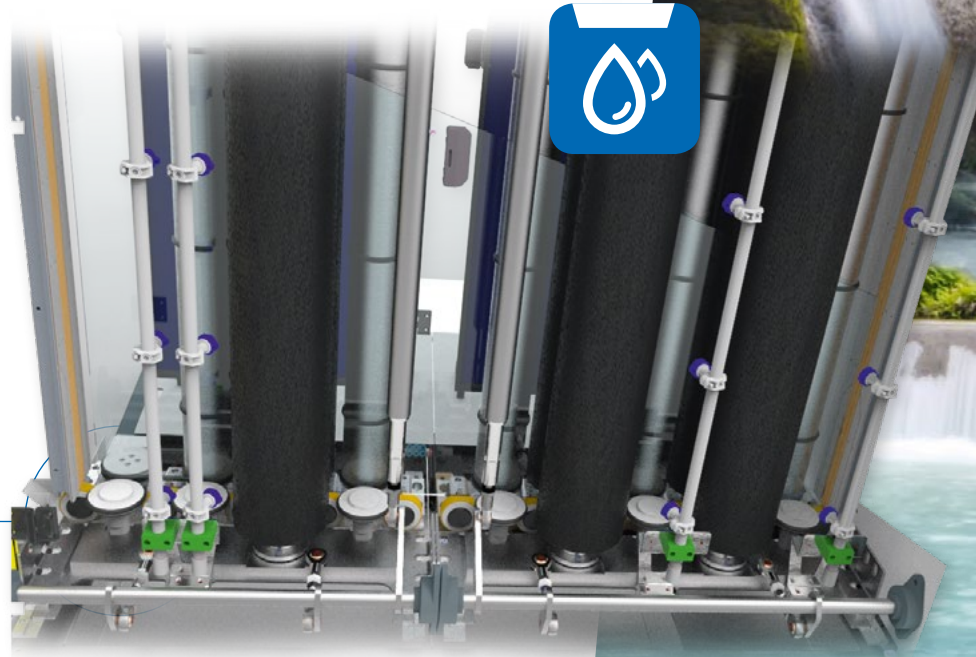
The washing section is divided in two zones, pre-wash zone and main wash zone.



The **pre-wash zone** is equipped with one pair of brushes and four spray tubes.



The **main wash zone** is equipped with two brush pairs and four spray tubes.



Machine equipped with smooth glass transport system





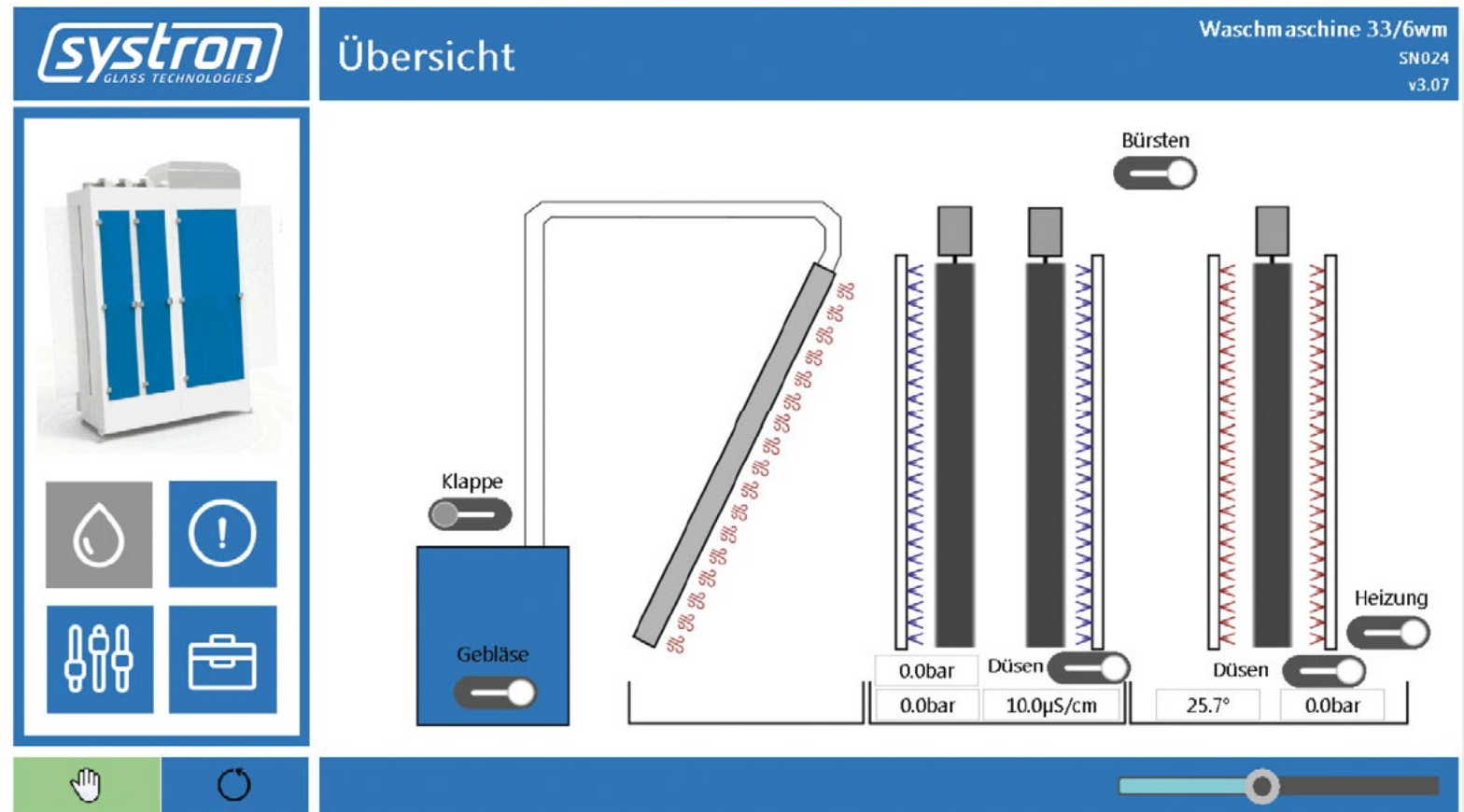
*Automatic adjustment
to the glass thickness
without loss of
cycle time*

Drying zone

The drying zone, which the glass is passing through in the last step, is equipped with a high-performance blower and ensures a crystal-clear visibility and guarantees a dry result.

Steering

Machine steering



The intuitive machine software is clearly displayed on a 15.6 inch touch panel.

A new operating concept allows fast and graphic operation of the machine.

Technical data

WM 27/6

WM 29/6

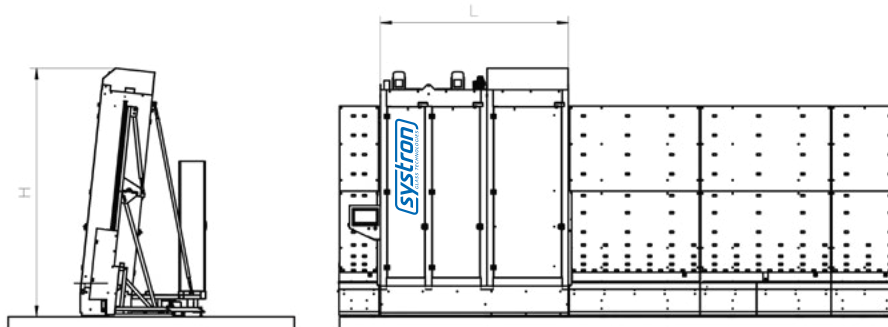
WM 33/6

Overall technical data

Max. glass height	mm	2700	2900	3300
Min. sheet size	mm	350 x 200	350 x 200	350 x 200
Max. glass weight	kg/lfm	200	200	200
Glass thickness	mm	4 bis 26	4 bis 26	4 bis 26
Glass running height	mm	520 oder 760	520 oder 760	520 oder 760
Glass inclination	Grad	6°	6°	6°
Max. washing speed	m/min	10	10	10

Dimensions

Machine height [520]	mm	3900	4100	4500
Machine height [760]	mm	4140	4340	4740
Machine length	mm	2900	2900	2900





syston
GLASS TECHNOLOGIES

syston GmbH . Pfarrwald 47 . 3354 Wolfsbach . Austria
+43 7477 44152 . office@syston.at . www.syston.at